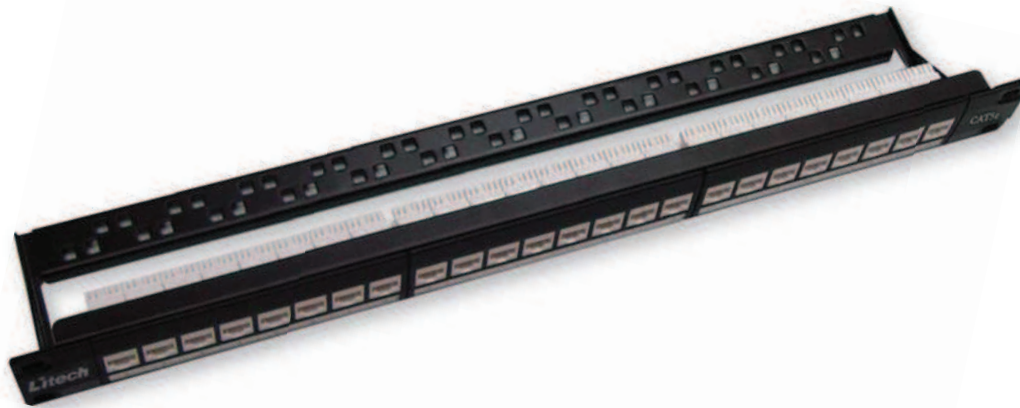


Category 5e Patch Panel



MECHANICAL CHARACTERISTICS

Modular Connector

Modular Connector	FCC part 68, Subpart F and
RJ45 8-Pin Connector	IEC-60603-7 compliant
	750 insertion cycles min.
Durability	Phosphor Bronze with 50
Material	microinches of gold over 100
	microinches nickel plating

Electrical Characteristics

Dielectric Strength	1,000V RMS at 60Hz for 1 minute
Current Rating	1.5Amp maximum
Insulation Resistance	10M Ω minimum
Contact Resistance	2m Ω per contact
Temperature Range	-10°C to +60°C
Transmission Performance	Exceeds ISO/IEC 11801 Class D
	AS/NZS 3080:2003 Class D

IDC Connector

IDC Connector	Insulation slicing of 22 to 24 AWG
	(0.64 to 0.41mm)
Insulation Diameter (Wire)	0.70 - 1.60mm
Durability	10 insertions of any combination of
	wire gauge - one wire per slot
Connector Material	Phosphor Bronze with nickel plating

IDC Body & Cover Material Fire-Retardant, UL 94V-0, Plastic

Litech range of products are the next generation of data communications solutions. The Category 5e Patch Panels are a perfect combination of sleek looks and outstanding performance. They feature 24 individual Category 5e modular jacks that are colour coded for both 568A and 568B standards and can be terminated using a Litech or Krone tool. Clear wire retaining caps are supplied and can be used to provide additional cable strain relief. The sleek silver face of the product comprises three designation-strip holders with a label kit supplied. Rear cable management tray, velcro cable ties, cage nuts and screws are also provided with the product. Combined with other Litech Products, they are the perfect solution to your voice and data communications needs.

Product Features

- Aesthetic, contemporary design
- Powder-coated metal framework
- Universal colour-coding for 568A and 568B standards
- Removable rear cable management tray
- Compatible with standard 19" equipment frames
- IDC termination using Litech or Krone tool
- Fully compliant to AS/NZS 3080:2003, ISO/IEC 11801 Edition 2 2002 and ANSI/TIA/EIA- 568-B. Series Connecting Hardware Standards.

Ordering Information

Part No.	Description
Cat 5e 24 Port UTP Patch Panel -	LTSS - PPC5E - S24
	Shielded
Cat 5e 24 Port UTP Patch Panel -	LTSS - PC5E - U24
	Unshielded
Cat 5e 48 Port UTP Patch Panel -	LTSS - PPC5E - S48
	Shielded
Cat 5e 48 Port UTP Patch Panel -	LTSS - PC5E - U48
	Unshielded